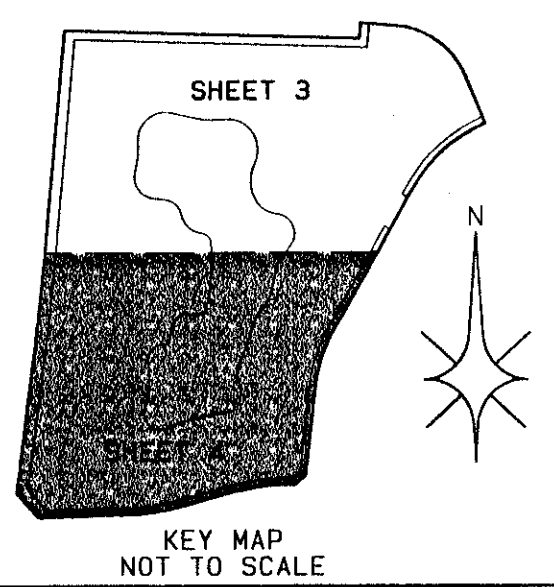


ST. ANDREWS AT THE SPRINGS

A PORTION OF JOG ROAD RESIDENTIAL P.U.D.
SITUATED IN THE SOUTHEAST QUARTER OF SECTION 10, TOWNSHIP 45 SOUTH,
RANGE 42 EAST, PALM BEACH COUNTY, FLORIDA

SHEET 4 OF 4

MAY 1998



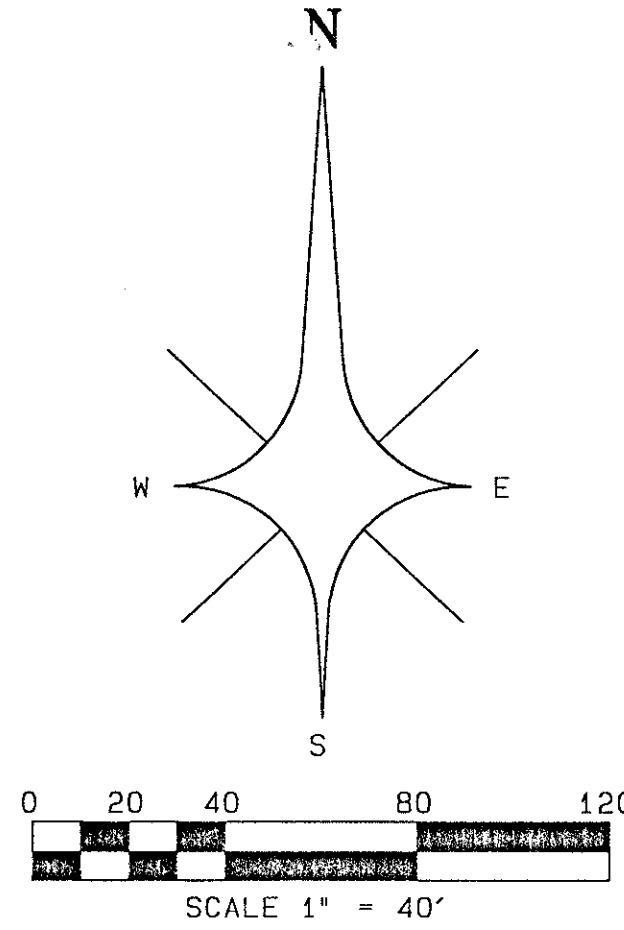
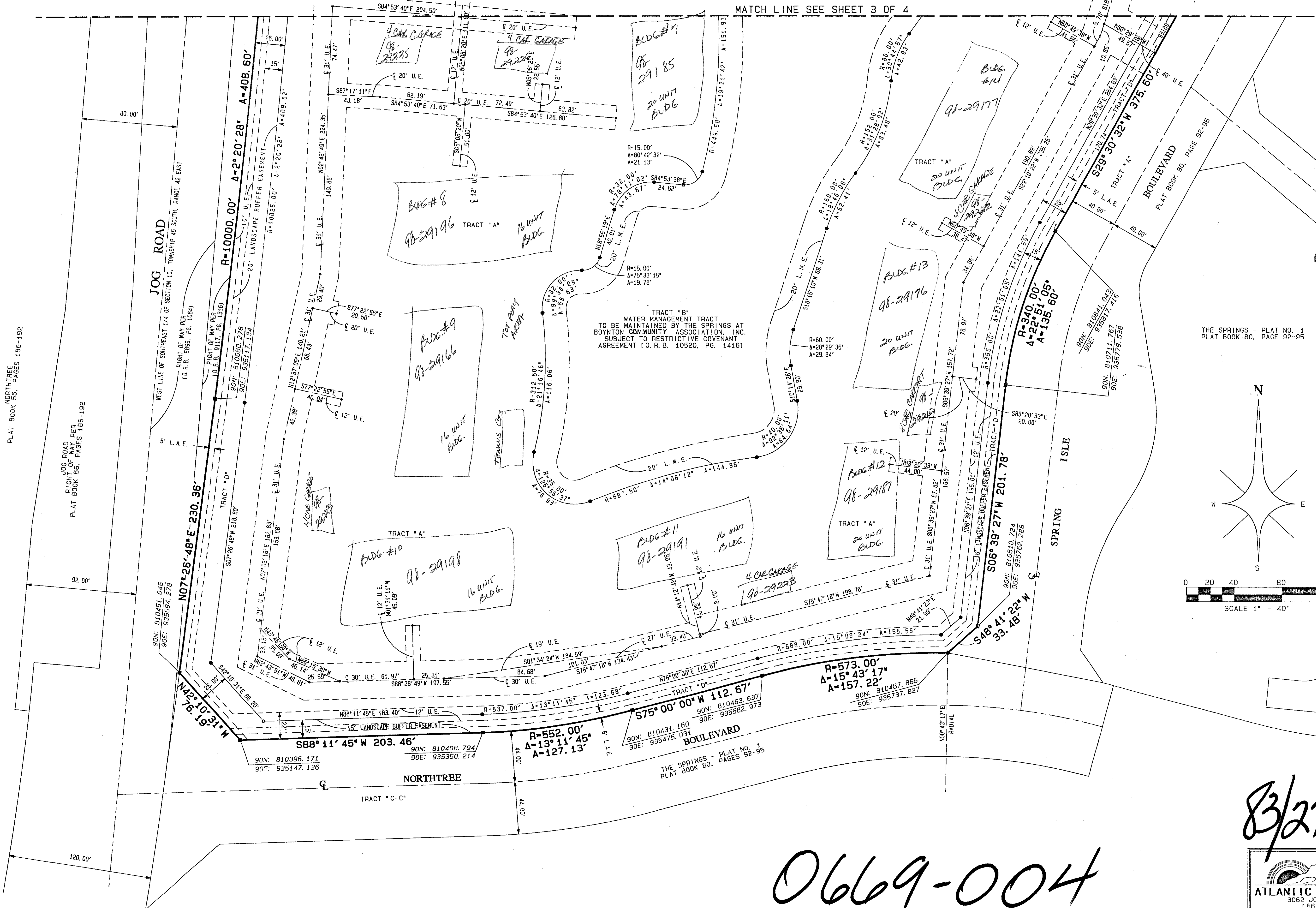
STATE OF FLORIDA } SS
COUNTY OF PALM BEACH }
THIS PLAT WAS FILED FOR
RECORD AT _____ DAY OF
THIS _____ AD 1998 AND
DULY RECORDED IN PLAT BOOK
_____ ON PAGES _____ AND

DOROTHY H. WILKEN, CLERK
CIRCUIT COURT
BY: _____ DC

THE SPRINGS - PLAT NO. 1
PLAT BOOK 80, PAGE 92-95

PET. 94-16A
CURRENT
5/2/2/I

PET. 94-16A
POD A



- LEGEND:
- A = CENTRAL ANGLE/DELTA
 - C = CENTERLINE
 - CH = CHORD
 - D.B. = DEED BOOK
 - D.E. = DRAINAGE EASEMENT
 - F.P. & L. = FLORIDA POWER AND LIGHT COMPANY
 - A = ARC LENGTH
 - L.A.E. = LIMITED ACCESS EASEMENT
 - L.M.A.E. = LAKE MAINTENANCE ACCESS EASEMENT
 - L.M.E. = LAKE MAINTENANCE EASEMENT
 - L.M.D.D. = LAKE WORTH DRAINAGE DISTRICT
 - N.R. = NON-RADIAL
 - N.T.S. = NOT TO SCALE
 - O.R.B. = OFFICIAL RECORDS BOOK
 - P.B. = PLAT BOOK
 - P.C. = POINT OF COMMENCEMENT
 - P.O.C. = POINT OF COMMENCEMENT
 - P.O.R. = POINT OF BEGINNING
 - R = RADIUS (RADII)
 - R.F. = RADIAL TO FRONT LOT LINE
 - R.R. = RADIAL TO REAR LOT LINE
 - R/W = RIGHT OF WAY
 - U.E. = UTILITY EASEMENT
 - W.C. = WITNESS CORNER
 - PM = PERMANENT REFERENCE MONUMENT (PRM)
 - SET PRM #5219 (UNLESS OTHERWISE NOTED)
 - MONUMENT SET 5/8" FROM ROD AND CAP LB4820 ACCORDING TO SECTION 177.09(1)(9) F.S.

83/27

0669-004

PROFESSIONAL SURVEYORS AND MAPPERS LB4820

ATLANTIC - CARIBBEAN MAPPING, INC.

3052 JOG ROAD - GREENACRES, FLORIDA 33457

(561) 964-7884; FAX (561) 964-1969

83
34
94-16
Jog Road Residential

PLAT BOOK NORTHREE 56, PAGES 186-192

RIGHT OF WAY PER JOG ROAD PLAT BOOK 56, PAGES 186-192

JOG ROAD

BOULEVARD

SPRING ISLE

THE SPRINGS - PLAT NO. 1
PLAT BOOK 80, PAGES 92-95

TRACT "B" WATER MANAGEMENT TRACT TO BE MAINTAINED BY THE SPRINGS AT BOYNTON COMMUNITY ASSOCIATION, INC. SUBJECT TO RESTRICTIVE COVENANT AGREEMENT (O.R.B. 10520, PG. 1416)

TRACT "A" 16 UNIT BLDG. 98-29196

TRACT "A" 16 UNIT BLDG. 98-29191

TRACT "A" 20 UNIT BLDG. 98-29176

TRACT "A" 20 UNIT BLDG. 98-29187

TRACT "A" 20 UNIT BLDG. 98-29177

TRACT "A" 20 UNIT BLDG. 98-29185

TRACT "A" 16 UNIT BLDG. 98-29196

TRACT "A" 16 UNIT BLDG. 98-29196

TRACT "A" 16 UNIT BLDG. 98-29198

TRACT "C-C"

TRACT "C-C"

TRACT "C-C"